

LabelTrace® and Server 2008 with EasyPrint Driver

Easy Print uses XPS to provide a driver independent target for printing (you can think of XPS like PDF and there is an XPS Viewer available from Microsoft). The XPS file is sent to the host machine and then the local driver is used to print.

When printing from LabelTrace® with the Easy Print Driver within a Remote Desktop session (Windows Server 2008 R2) the standard Generic / Text Only driver **will not work**.

This is a known problem and Microsoft's solution is to use Group Policy to disable Easy Print:

Using the Group Policy Editor (Start->Run->gpedit.msc)

Disable "Use Terminal Services Easy Print printer driver first" Group Policy setting and install the printer driver on both client side and the server side (we use the Generic/Text Only driver so this isn't required). The Group Policy setting is located at:

For Windows Server 2008 DC:

```
Computer Configuration\Administrative Templates\Windows Components\Terminal Services\Terminal Server\Printer Redirection
```

For Windows Server 2008 R2 DC:

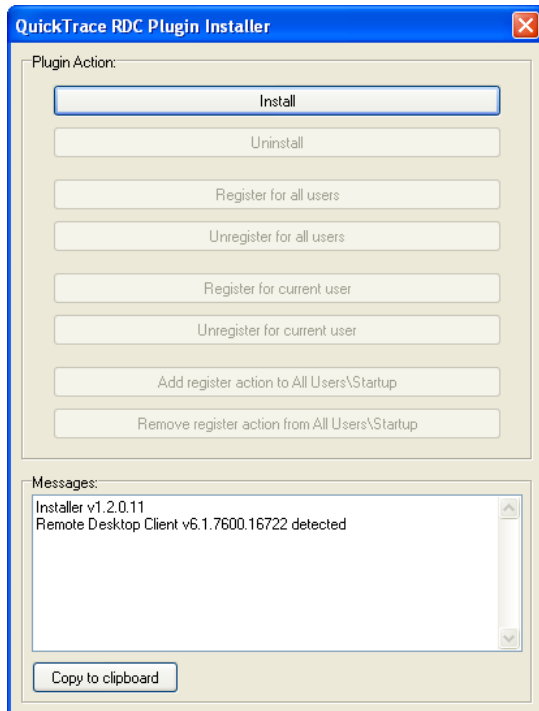
```
Computer Configuration\Administrative Templates\Windows Components\Remote Desktop Services\Remote Desktop Session Host\Printer Redirection
```

However it is not always possible to make this change and so the solution is to use a modified version of LabelTrace® which is aware of EasyPrint (at least LT RT19.122), This also requires the "QT Remote Desktop Connection Plugin" (QTRDCPlugin) custom control installed on the local PC itself (**NOT in a remote session on the local PC!**). The plugin creates a Virtual Channel for LabelTrace® to pass data to the local PC. The data is encrypted such that only QuickTrace products can use the plugin.

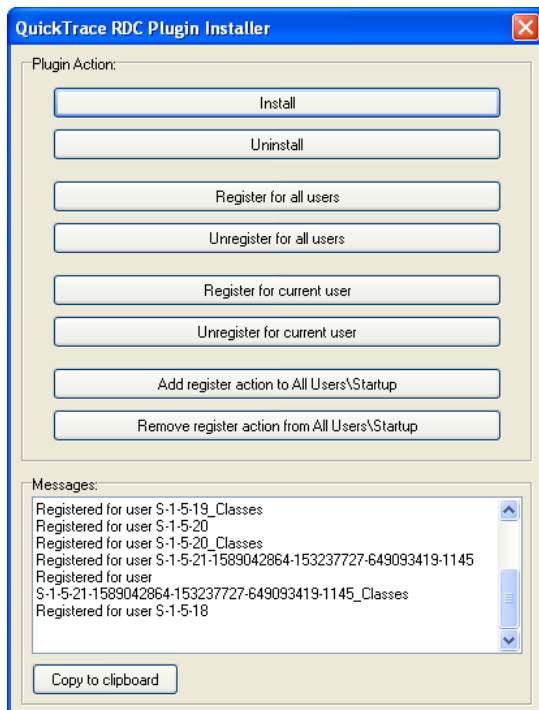
The QTRDCPlugin is installed from here (there is also a link to this in the Software section of the Support page of the QuickTrace web site) ...

http://www.quicktrace.co.uk/support/qtrdcplugin_setup.exe

The plugin needs to be installed then registered. Run the above exe from the link.
The following window appears.

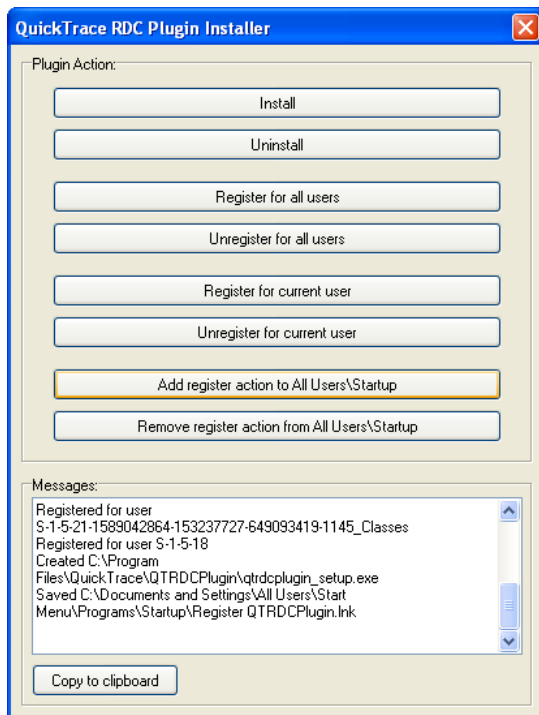


Click the install button to install it on the PC.



By default, it is registered for all users already existing on the PC. Buttons allow for various registering and unregistering actions and uninstalling. One important function is to **ensure that the control will be available automatically to any new users.**

This may be achieved by clicking the “Add register action to All Users\Startup”. This ensures that every time a user starts up or simply logs on to the PC that the control is registered.



Other mechanism may be used to achieve the same outcome. The setup application has command line parameters so that the installation can be scripted (eg as part of a logon batch file).

The command options are :

Option	Description
-q	Quiet. Informational dialogs are not displayed. Error dialogs will be displayed.
-log FILE	Write information which would normally be displayed in the <code>Messages:</code> part of the application to <code>FILE</code> . Useful with <code>-q</code> .
-install	Copy the plugin to <code>%ProgramFiles%\QuickTrace\QTRDCPlugin</code> and register for all users.
-uninstall	Delete the plugin folder <code>%ProgramFiles%\QuickTrace\QTRDCPlugin</code> and unregister for all users.
-register	Register the plugin for the current user. Will assume <code>-install</code> if the plugin does not exist.
-unregister	Unregister the plugin for the current user.
-all	Makes <code>-register</code> and <code>-unregister</code> apply to all users

To allow for updates to the plugin the recommended solution is to put `qtrdcplugin_setup.exe` on a network share and run `qtrdcplugin_setup.exe -q -install` for each user when they logon.

If you don't want to overwrite the file for each logon then `qtrdcplugin_setup.exe -q -register` can be used as it will only copy the file if it doesn't exist.

If `qtrdcplugin_setup.exe` is ran as part of a Group Policy Object then it should be running as the System User account and be able to install the plugin without prompting the user to elevate their privileges.

Here is part the `logon.vbs` file we run in the QuickTrace office from a Group Policy Object:

```
Set shell = CreateObject("WScript.Shell")

shell.Exec "\\quicktrace.local\dfs\pub\installers\qtrdcplugin_setup.exe -install -q"
```

If you want to check that `qtrdcplugin_setup.exe` is being run you can use the `-log` option, eg:

```
Set shell = CreateObject("WScript.Shell")

shell.Exec "\\quicktrace.local\dfs\pub\installers\qtrdcplugin_setup.exe -install -q -log %TEMP%\qtrdcplugin_setup.txt"
```

will cause a file called `qtrdcplugin_setup.txt` to be written to in the users temp folder. (Use Start->Run and type `%TEMP%`)

Note that the log file will be appended to and will grow in size indefinitely.