

Installing FlexaTrace to Print Labels from LabelTrace® in Terminal Services or Citrix Sessions

Introduction

LabelTrace® running in a Terminal Server or Citrix Server session may not be able to directly print to a label printer. This can be due to a desire to avoid installing the required printer drivers on the server, for example to use Brother QL printers. This can however be achieved by using FlexaTrace to act as a print manager on the client workstation. In this configuration, LabelTrace® prints to a dummy printer. The dummy printer captures the data and passes this to the FlexaTrace application. FlexaTrace processes this data and carries out the actual printing.

NOTE: For the purposes of this document, it is assumed that LabelTrace® is already installed and configured to print the required templates in the conventional fashion to a “print from LabelTrace®” printer, forwarded into the session.

Installing and Configuring FlexaTrace

FlexaTrace may be installed in a client-server or standalone configuration for this purpose.

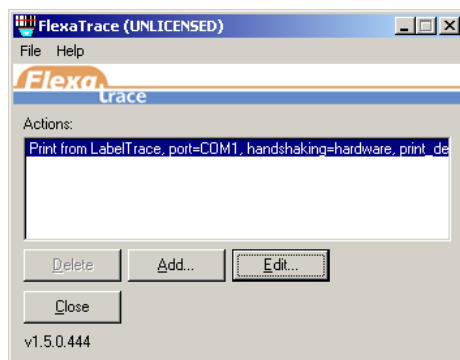
Run or rerun the FT Central installer (from RT2.58 and above), selecting the “Print from LabelTrace®” option in addition to any previously selected options .

Now run or rerun the FT client installer on the required workstation, choosing to install the “Print from LabelTrace®” option. When this completes, a dummy printer “print from LabelTrace®” will have been created.

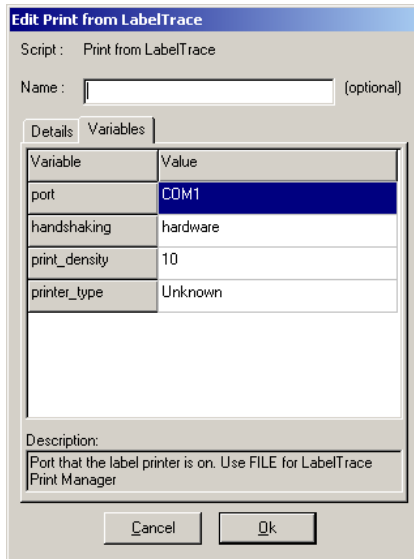
Configure the FlexaTrace Client



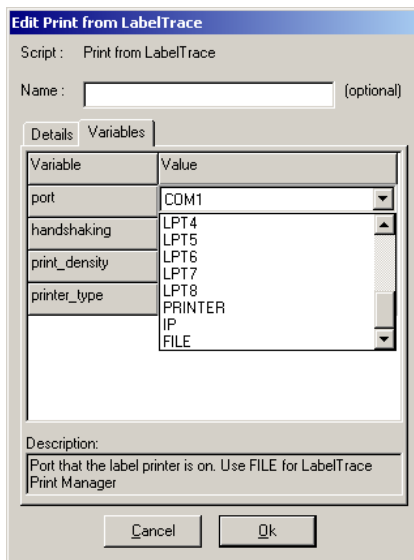
Right click on the FlexaTrace icon running in the system tray and select “open”



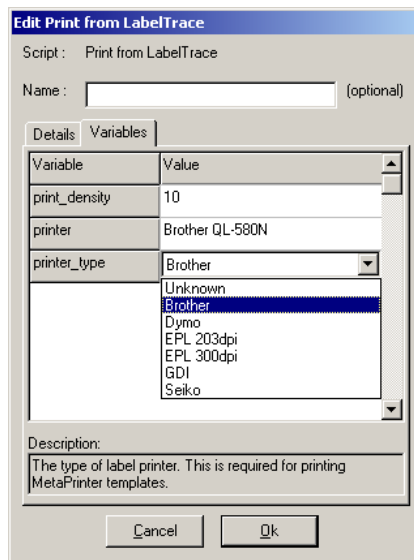
Double click the “Print from LabelTrace®” Action entry to edit the parameters on the Variables tab to the required values.



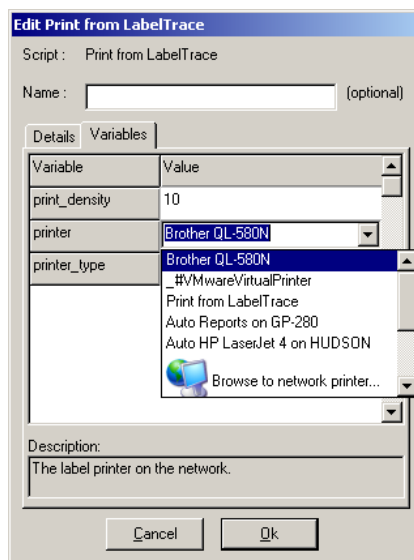
Clicking on the current value of each parameter will cause it to change to a drop down list of available options, as shown for “Port” in the following screenshot.



Select the appropriate data for the Port. (“Printer” is for Windows Printer)



On the Variables tab, click on the current value for the “printer_type” field. This causes the current entry to become a drop down list. From this list, select e.g. “Brother”. For some printer type selections, including Brother, the printer port defaults automatically to the value “Printer” and thus is hidden.



On the Variables tab, click on the current value for the “printer” field. This causes the current entry to become a drop down list of the available Windows printers. From this list, select the required printer.

Unless using a Zebra printer, ignore the Print Density parameter. Otherwise set it to a suitable value for the target printer, e.g. 10. Increasing this value makes the print darker. The max value for EPL printers is 15 (higher values are treated as if 15). For ZPL printers, the max value is 30.

Click OK to save and exit editing then click on “Close” to close the FlexaTrace window. FlexaTrace will still be running in the system tray and is now ready to print labels.

Points to Note

The “print from LabelTrace” dummy printer must be forwarded into the TS or Citrix Session. This may require...

1. ensuring that a registry patch to force forwarding of printers on non-standard ports is run (once for each Windows user) as recommended by Microsoft. This patch is available from here ...

http://www.quicktrace.co.uk/support/fixrdp_for_LabelTrace®.reg

Note that it may need to be renamed after downloading.

2. that there are no security policies preventing the printer from being forwarded.

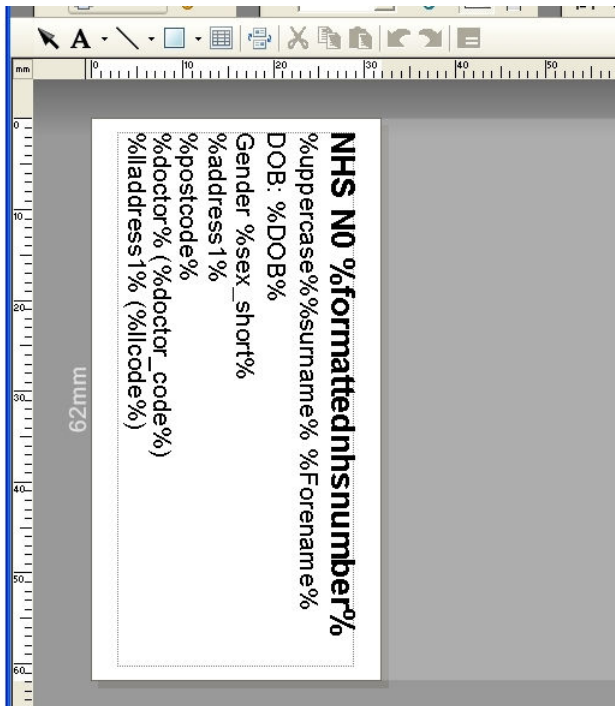
Templates

LabelTrace® needs to have suitable MetaPrinter templates designed for the target printer and media. An example is given here ..

```
[printer_extension]
script=metaprinter
```

```
StartLabel -brothertype 259 -w 62 -h 33 -copies 2
DrawText -text {NHS No %formattednhsnumber%} -x 0 -y 0.5 -w 50 -h 10 -font {arial,10,bold}
DrawText -text {%uppercase%%surname%%forename%} -x 0 -y 4.5 -w 50 -h 10 -font {arial,9,normal}
DrawText -text {DOB: %DOB%} -x 0 -y 8 -w 50 -h 10 -font {arial,9,normal}
DrawText -text {Gender: %sex_short%} -x 0 -y 11.5 -w 50 -h 10 -font {arial,9,normal}
DrawText -text {%address1%} -x 0 -y 15 -w 50 -h 10 -font {arial,9,normal}
DrawText -text {%postcode%} -x 0 -y 18.5 -w 50 -h 10 -font {arial,9,normal}
DrawText -text {%doctor% (%doctor_code%)} -x 0 -y 22 -w 50 -h 10 -font {arial,9,normal}
DrawText -text {%lladdress1% (%llcode%)} -x 0 -y 25.5 -w 50 -h 10 -font {arial,9,normal}
EndLabel
```

In the case of using FlexaTrace to print labels to Brother printers, there is alternative methods of printing which utilises .lbl template files which have been created in the Brother P-Touch Editor. These will have names like “form.lbl”. This allows more complex templates to be used than are currently supported via native MetaPrinter commands. The following screenshot shows how LabelTrace® fields are set up in the lbl template ...



In order to use these lbl files, the corresponding template in LabelTrace® itself must reference the relevant lbl file and provide the demographics. The following is an example to print the “form.lbl” file

```
StartLabel -template form
application=%application%
username=%username%
patientid=%patientid%
title=%title%
surname=%surname%
forename=%forename%
middlename=%middlename%
address1=%address1%
address2=%address2%
address3=%address3%
address4=%address4%
```

address5=%address5%
address6=%address6%
postcode=%postcode%
dob=%DOB%
sex=%sex%
sex_short=%sex_short%
nhsnumber=%nhsnumber%
formattednhsnumber=%formattednhsnumber%
hcnumber=%hcnumber%
age=%age%
height=%height%
weight=%weight%
phone=%phone%
phonework=%phonework%
phonemobile=%phonemobile%
email=%email%
phonefax=%phonefax%
phonepager=%phonepager%
gmpcode=%gmpcode%
roleassertionid=%roleassertionid%
pregnant=%pregnant%
smoker=%smoker%
drinker=%drinker%
diabetic=%diabetic%
bmi=%bmi%
bp=%bp%
bupdate=%bupdate%
pulse=%pulse%
doctor=%doctor%
doctor_code=%doctor_code%
doctor_code1=%doctor_code1%
doctor_code2=%doctor_code2%
doctor_code3=%doctor_code3%
doctor_code4=%doctor_code4%
doctor_code5=%doctor_code5%
doctor_code6=%doctor_code6%
doctor_code7=%doctor_code7%
doctor_code8=%doctor_code8%
doctor_code9=%doctor_code9%
premises=%premises%
lladdress1=%lladdress1%
lladdress2=%lladdress2%
lladdress3=%lladdress3%
lladdress4=%lladdress4%
llpostcode=%llpostcode%
llcode=%llcode%
lltel=%lltel%
remote_script=brother
EndLabel