

Migrating LabelTrace Central (SQLServer)

- Migrating LabelTrace Central (SQLServer)
 - ◆ Required Software
 - ◆ Step 1 : Extract data from sqlserver
 - ◆ Step 2 : Install LabelTrace Central on the new server
 - ◆ Step 3 : Import the data
 - ◆ Step 4 : Copy files and folders
 - ◆ Step 5 : SQLServer Permissions
 - ◆ Step 7 : Client

How to move LabelTrace Central from one server to another when you are using SQLServer.

This is also how to migrate from SQLServer 6.5 to 2000.

Required Software

- LabelTrace Central CD
- sqlexport command line tool
- sqliteimport command line tool (v1.10 required from website or archive)

Step 1 : Extract data from sqlserver

Assuming that the QuickTrace database is called 'quicktrace' and you are on the SQLServer machine.

Create a folder `sqlexport` under `LTDATA` and place the `sqlexport` utility and it's required files there.

Using the command prompt CD into that directory and then type the following:

```
sqlexport -s localhost
```

If the QuickTrace database is not called 'quicktrace' then use `-d dbname` option.

You will need to be able to access this `LTDATA` folder from the new server. Assume that it is in `c:\old\ltdata`

Step 2 : Install LabelTrace Central on the new server

Install LabelTrace Central onto the new server ensuring that the database is specified as `sqlserver`.

Step 3 : Import the data

Create a folder under `LTDATA` called `sqlimport` and put the `sqlimport` application and its required files there.

Assuming that you have installed into `C:\LTDATA` and the old `LTDATA`, with the `sqlexport` files is `C:\OLD\LTDATA` then, CD into the `C:\LTDATA\sqlimport` directory and run the following command:

Migrating LabelTrace Central (SQLServer)

```
sqlimport -b c:\old\ltdata\sqllexport
```

Step 4 : Copy files and folders

Copy `labeltrace.lic`, `scripts` and any templates from the old server to the new one.

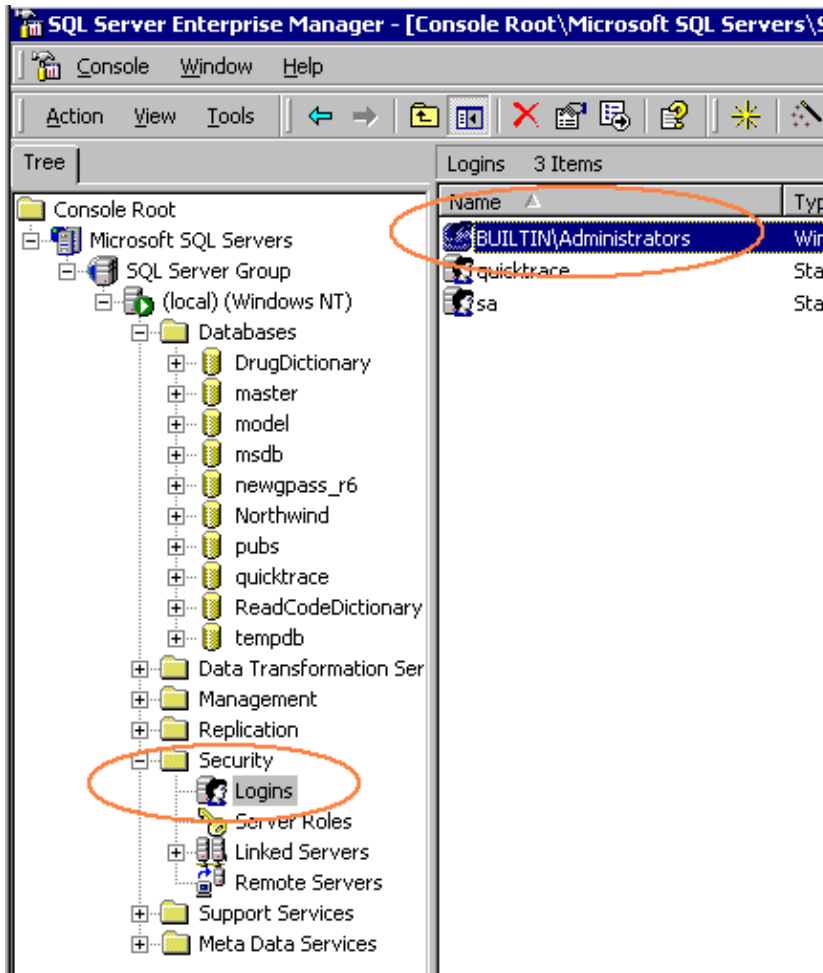
Copy `ltrace.ini` from the old server and then edit it so that the correct SQLServer is referenced.

Step 5 : SQLServer Permissions

The security model for `gpss` has changed so you may find that users do not have the correct permission to synchronise.

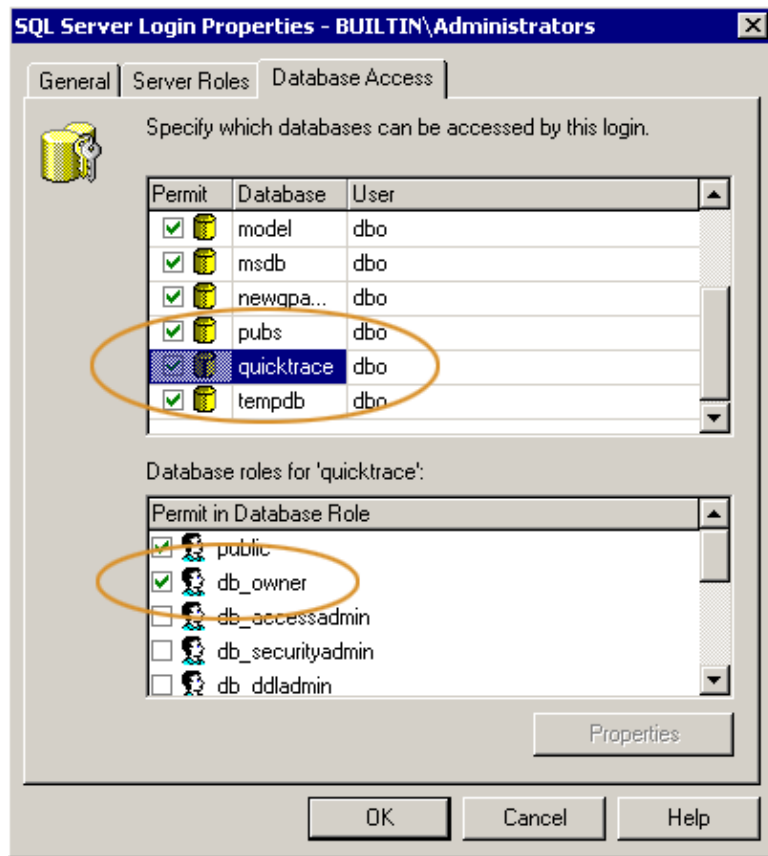
The easiest way to fix this is to add the users group to the `quicktrace` database and assign them the `db_owner` role. The name of the user group may be practice specific.

To do this use Enterprise Manager and then open the `Security\Logins` part of the tree. The users and groups will appear on the right hand side. Right click on the users group and select properties :



Then select the Database Access tab and ensure that the `quicktrace` database and `db_owner` are ticked :

Migrating LabelTrace Central (SQLServer)



Step 7 : Client

The clients have to point at this new server by changing the preferences in the LabelTrace client and Management Utility.