

FlexaTrace XPS Driver Installation Guide

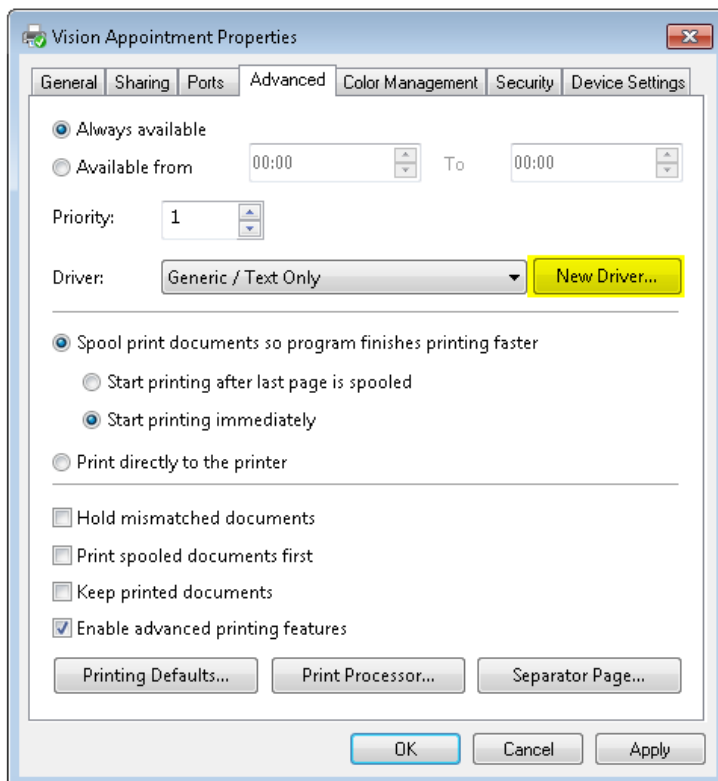
You will need at least FlexaTrace RT2.108 to use the FT XPS Driver.

Download this file:

<http://www.quicktrace.co.uk/temp/ftxpsdrv.zip>

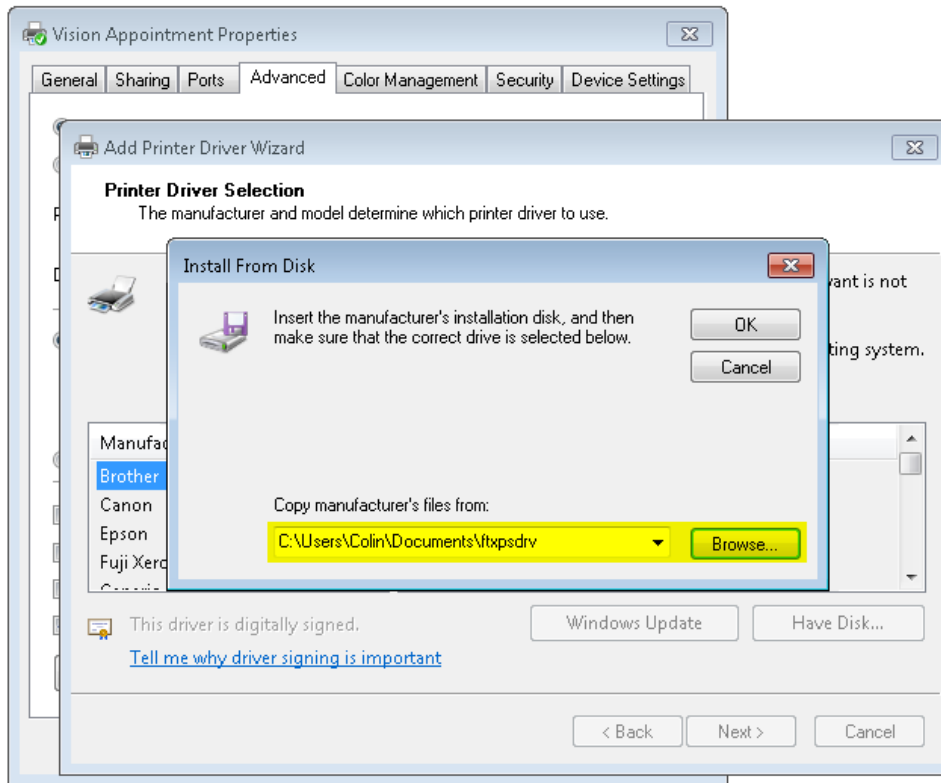
and unzip it unto a folder.

On the host machine, select the properties of the printer and select the advanced tab.

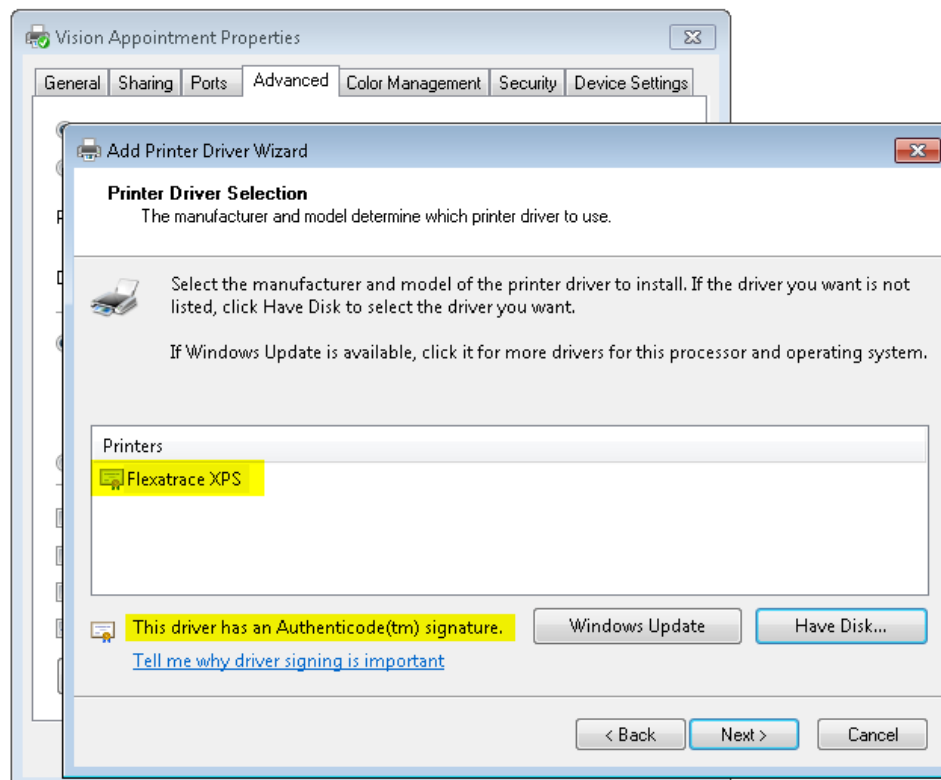


Click on "New Driver", then "Have Disk" and select the `ftxpsdrv.inf` file which was extracted from the zip file.

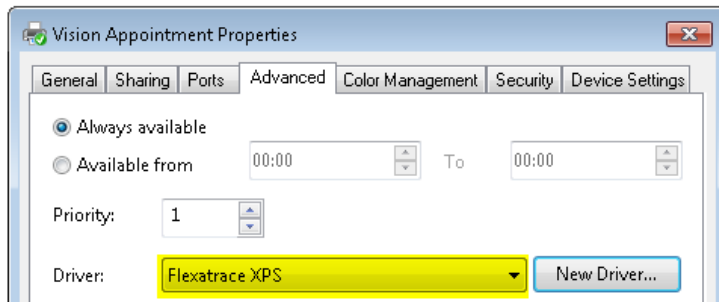
FlexaTrace XPS Driver Installation Guide



If you're running XP then ignore any errors about the driver not being signed. On Windows Vista and above the Authenticode signature should be detected.



After pressing "Next >", the printer driver should now be "FlexaTrace XPS".



FAQ

What if I use Windows Server 2003

If you use this driver and connect to a Windows Server 2003 machine then the printer will not appear unless you install the driver on the server.

On the server use Start -> Printers and Faxes.

Then in Printers and Faxes select the menu item File -> Server Properties.

Select the Drivers tab and add the driver using the above instructions.

